



The year 2024 has seen an explosion of groundbreaking innovations in pro audio and lighting technologies, driving the evolution of the industry. As the demand for advanced solutions continues to soar, established brands have strengthened their portfolios, while emerging players have introduced game-changing products that are reshaping the landscape.

PALM Expo Magazine has been tracking these innovations throughout the year, just as it has for years, spotlighting the most cutting-edge launches in the industry. From January through December, we document the latest products in rental sound, install sound, studio sound, PA sound applications, and professional lighting installs, recognising their impact on the market, their technological advancements, and their growing popularity in the Indian subcontinent.

The PALM Expo Magazine Team has meticulously curated this year's Top 50 Products of 2024, celebrating the most impressive audio and lighting solutions launched throughout the year. This non-defining, unranked list highlights technologies that push boundaries and set new industry standards, for the Indian market.

Dive in and explore the innovations shaping pro audio and lighting in 2024!

TOP 50 PRODUCTS & TECHNOLOGY

Global Pro Audio & Lighting Technology



1. Ahuja IMPRESS 100T Wall Speakers

The IMPRESS 100 T Wall speakers are a new range of high-performance 2-way premium wall speakers – IMPRESS series. These speakers feature a modern and attractive plastic housing and deliver superb tonal quality with uniform coverage, making them ideal for both music and speech applications. They are perfect for a variety of venues, including places of mass transit, hotels, restaurants, lounges, conference rooms, and showrooms. They feature a water-resistant PP coated cone woofer, a titanium dome tweeter, and a 2-way crossover network. Additionally, a unique mounting system allows for 90° horizontal and 45° vertical rotation of the speakers. With 100V connectivity and multiple power taps, these speakers are versatile enough to be used to deliver mesmerizing audio experience in venues of different dimensions and sizes.

2. Beyerdynamic DT 1770 PRO MKII

The Beyerdynamic DT 1770 PRO MKII offers a high level of sound insulation due to their closed back design. The DT 1770 PRO MKII feature the latest generation of TESLA driver technology TESLA.45. Redesigned from the ground up, the 45mm driver system boasts an excellent resolution, extremely low distortion and outstanding impulse behaviour. The TESLA.45 provides signal fidelity even at high volumes. The DT 1770 PRO MKII has an impedance of 30 ohms, which means that the studio headphones can be used with a variety of end devices. Each DT 1770 PRO MKII contains two TESLA.45 sound transducers, which are measured several times during the various production steps.



3. Sennheiser HD490 Pro Plus Headphones

The Sennheiser HD 490 PRO Plus studio headphones are meticulously engineered to meet the demands of modern music production. Their open-back design delivers an expansive, three-dimensional soundstage with precise localization, ensuring accurate sound reproduction across the full spectrum. A standout feature is the inclusion of the dearVR MIX-SE plugin from Dear Reality, which transforms your digital audio workstation into a virtual mixing environment, simulating the acoustics of professional studios for consistent mix translation across different systems. With a frequency response of 5 Hz to 36,000 Hz and a maximum sound pressure level of 128 dB SPL, the HD 490 PRO Plus ensures detailed and dynamic audio playback.



4. Genelec UNIO Personal Reference Monitoring Solution

The UNIO Personal Reference Monitoring Solution (PRM) creates a seamless bridge between in-room loudspeaker and personal headphone monitoring. Comprising the 9320A Reference Controller, Reference Measurement Microphone, and the 8550A Professional Reference Headphones, the active design of the 8550A headphones allows the 9320A controller to adjust to the headphones' unique factory calibration. This brings precise resolution and neutrality to the headphone listening experience, which can be further personalised through Genelec's GLM software and Aural ID V2 binaural technology.



5. Beta 3 EX42 System

The Beta Three EX42 is a versatile 7-unit, 2-way inverted full-range speaker system designed for dynamic sound reinforcement. It features dual 4-inch woofers and five silk-dome tweeters, delivering clear and balanced audio. Constructed from durable, lightweight ABS plastic, the EX42 is both compact and highly adaptable. Its modular design allows it to function as a standalone point sound source or be combined with other units to accommodate various spatial audio needs. Integrated with Dirac Live optimization software, it ensures consistent and precise sound quality across different configurations.



6. DPA 2061 Lavalier Microphone

The DPA 2061 is a premium omnidirectional lavalier microphone for crystal-clear sound with minimal distortion. Designed with a discreet 2.2mm cable, it offers durability and ease of use in professional settings. Whether used in broadcast, theater, or corporate applications, the 2061 delivers exceptional clarity, even in challenging environments, making it an essential tool for precision audio capture.



7. ATi Pro BL5500 4-Channel Amplifier

The BL5500 is a high-performance amplifier designed for demanding audio environments, delivering exceptional power and reliability. It provides 4x1200W at 8Ω in stereo mode, ensuring powerful sound output across multiple channels, while at 4Ω, it offers 4x1400W, maintaining excellent sound quality and stability. In bridged mode, the amplifier delivers 2x3400W at 8Ω and an impressive 2x6600W at 4Ω, making it ideal for driving larger speakers with enhanced power and headroom. Measuring 483x480x100mm, its compact design allows for easy integration into standard racks. Engineered for versatility and durability, the BL5500 is perfect for large-scale live events, touring, and fixed installations, ensuring superior performance and reliability in professional sound reinforcement applications.



8. RME HDSPE AoX - M Card

The RME HDSPE AoX-M is a 512-channel PCI Express x4 audio interface card featuring dual RJ45 network ports, AES3, MIDI, and headphone output. It supports optional MADI extensions, enabling up to four MADI I/Os alongside 256 network audio channels per direction. Compatible with macOS and Windows, the card offers advanced mixing and routing capabilities, making it ideal for DAWs, audio processors, or Thunderbolt expansion chassis. With Milan compatibility, it delivers seamless integration into professional studio and live setups, providing a compact yet powerful solution for high-capacity audio networking.



9. AUDAC VEXO28 Loudspeaker

AUDAC's VEXO28 3-way performance loudspeaker engineered for perfection, an 8" coaxial configuration is precisely combined with a LF 8" driver to create a rich sound you would expect only from a 12" loudspeaker in its class. In addition, a better coverage pattern is achieved thanks to the way these drivers form a 3-way configuration and deliver consistent coverage to every listener.



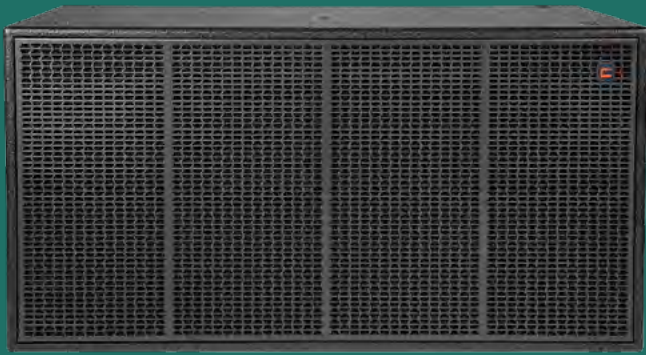
10. Baassfx BFX-24LA

Measuring just 800mm width, the BFX-24LA houses two powerful 12" woofers despite being of a comparable size to many of the less impactful double 10" cabinets found in the market today. More than many similarly sized compact alternatives, the BFX24's double 10" design packs a punch, delivering a throaty low-mid growl with up to 6 dB more output in the low-mid frequency range plus lower distortion. Meanwhile the custom chassis boasts a purpose developed waveguide producing 12 degrees vertical dispersion and either 80 or 120 degrees horizontal dispersion, as required. This combines a 1.4" mid-high compression driver with a 3" diaphragm to produce sparkling top-end.



11. Electro-Voice ZLX G2 Portable Speaker

The standout audio quality that made ZLX the go-to choice for both musical performance/playback and spoken-word applications has been leveled-up with ZLX G2. Maximum SPL has increased to 129 dB (ZLX-15P-G2), and premium components behind the grille ensure ZLX G2 offers stunning acoustic performance for everyday use. The woofer and compression driver in each ZLX G2 model are coupled to a patented SST (Signal Synchronized Transducers) ported waveguide, enhancing low-frequency extension and delivering even vertical and horizontal coverage across all frequencies – all while allowing a more compact form factor. ZLX G2 packs a sonic punch that's worthy of the Electro-Voice name.



12. Celto CSW218 Subwoofer

This is a high performance subwoofer with 3000W RMS power capacity. It has a clean and deep reproduction with premium custom CELTO high excursion drivers. It has a nominal impedance of 4 ohms and delivers a frequency response of 34 to 1500 Hz (-6 dB in half-space without EQ). It offers an average sensitivity of 100 dB/W/m within the 40 to 150 Hz range and can achieve a maximum calculated SPL of 135 dB RMS, peaking at 141 dB at 1 metre. The nominal directivity remains omnidirectional within its usable frequency range, ensuring broad and even sound dispersion.



13. DiGiCo Quantum 326

The Quantum 326 console puts a duo of 17-inch, 1000 nit, high brightness multitouch screens at your disposal, with both the meter bridge and soft quick select buttons displayed on each screen for quick, intuitive operation. In addition, 51 individual TFT channel displays join the floating Quantum chassis with 26 100mm touch sensitive faders laid out in two blocks of 12 fader banks plus two dedicated user-assignable faders, each with high resolution metering. Superior local audio connectivity and performance comes courtesy of new "Ultimate Stadius" 32-bit ADC and DAC conversion, which is built into the Quantum 326 as standard alongside six single or three redundant MADI connections, dual DMI slots and a built-in UB MADI USB recording interface.



14. L-Acoustics Xi Series Speakers

The L-Acoustics X6i and X8i are high-performance 2-way passive point source loudspeakers designed for versatility and precision. Both models feature a coaxial design and L-Vents technology, optimising airflow and reducing turbulence for improved sound clarity. The X6i delivers a maximum SPL of 123 dB ([X6i preset]) with a frequency range of 54 Hz–20 kHz ([X6i_50 preset]). It incorporates a 6.5" LF driver and a 1.5" HF driver, offering a consistent 90° x 90° directivity. Weighing 6.3 kg (14 lb), it is compact yet powerful, making it ideal for installations requiring discreet but effective audio solutions. The X8i offers a higher SPL of 129 dB ([X8i preset]) and a broader frequency range of 43 Hz–20 kHz ([X8i_40 preset]).



15. Meyer Sound ULTRA-X80 Loudspeaker

The Meyer Sound Versatile Point Source ULTRA-X80 loudspeaker offers powerful, compact sound reinforcement with Meyer Sound's signature clarity and performance, all in a lightweight, versatile design. Ideal for small to medium-sized venues, live sound, AV presentations, and installation applications, the ULTRA-X80 adapts easily to a variety of configurations while delivering consistent, high-fidelity audio. The ULTRA-X80 is an evolution of the ULTRA family's innovative concentric-driver design, which couples two 12-inch neodymium-magnet cone drivers to a rotatable 95° x 40° waveguide coupled to a 4-inch high-frequency compression driver.



16. Leksa ENG KIT PRO 50W

Leksa's ENG PRO 50W kit serves as highly useful and flexible companion, enhancing mobility and ease of use. These lights operate within a rated input voltage of AC 220V to 240V at 50Hz, with a system wattage of 50W. Offering an LED efficacy of 100 lumens per watt, they produce a total output of 5000 lumens. The colour temperature (CCT) range spans from 3000K to 6000K, utilising high-lumen COB-based chips with excellent purity parameters. Additionally, they support both manual and remote-control operation, ensuring versatility in various filming environments.



17. DENON PRIME GO+

The PRIME GO+ is a rechargeable, battery-powered DJ system with built-in Wi-Fi for streaming from services like Amazon Music Unlimited, TIDAL, Beatport, Beatsource, SoundCloud GO+, and Dropbox. It features a USB input, SD card slot for music libraries, and multiple outputs including balanced XLR, unbalanced RCA, 1/4" booth, RCA auxiliary, and two combo-jack microphone inputs. With 26 main effects, 2 knob-controlled Sweep FX, 10 interactive Touch FX, and a sampler with 4 dual-layer performance pads per deck, the device offers creative flexibility.



18. MAC Viper XIP

The MAC Viper XIP delivers unmatched lighting performance with IP54-rated durability. It combines powerful lumen output and Martin's XIP Technology for water and dust protection. Ideal for indoor and temporary outdoor use, it features low noise levels and precision optics. With a proprietary light engine, it offers a 5° narrow, high-contrast beam with exceptional lumen maintenance. XIP Technology optimizes design without added weight, size, or cost.

Perfect for grand outdoor events or refined indoor setups, the MAC Viper XIP ensures brilliant output, vibrant colour mixing, and seamless control. It's the ultimate solution for versatile lighting experiences.



19. N-Labs QLA122 Line Array

The N-Labs QLA122 represents the pinnacle of Indian audio engineering innovation. This active line array system combines a powerful 12" NEO LMF driver with INVERTED DUSTCAP delivering 134 dB SPL with a 3" titanium diaphragm HF driver, all powered by an advanced Class D hybrid amplifier. The system features sophisticated Ai APC/iiR/FiR processing with 48 preset banks and operates on a versatile 90-263 VAC power supply. Built with premium RUSSIAN BIRCH plywood construction, the QLA122 offers studio-quality sound reinforcement for professional applications. This Made-in-India system stands toe-to-toe with international competitors while providing superior reliability and local after Sales support, making it an ideal choice for demanding audio professionals.



20. Pulz V5X + V6L Line Source System

Pulz V5X + V6L are a 3-way true line source system capable of high SPL and clarity on and off axis in a compact format. Pulz V5X mid high section consist of a 5" mid driver with a coaxially mounted compression driver loaded with a CAD optimised wave guide to form a true line source. A 6.5kHz. passive crossover seamlessly integrates the Mid and HF drivers for a near flat frequency response with minimum EQ. The operating range of the V5X is optimised from 500 Hz. to 20kHz. The system is designed for easy powering and deployment irrespective of the size and shape of the venue. The V6L LF section is powered with 2 x 6.5" drivers with neodymium motor. The box design of V6L and V5X are externally identical for visual compatibility and continuous rigging. Critically designed and tuned V6L extends the low frequency capability of the system down to 65 Hz.



21. Shure Axient® Digital PSM In Ear Monitor System

The Shure Axient® Digital PSM is an advanced digital in-ear monitor system powered by Shure WMAS innovation, offering exceptional spectral efficiency and scalable channel count. It features patented Spatial Diversity transmission to defend against multipath interference and True Digital Diversity reception, which combines two discrete RF signals for improved signal reception and range. The system provides four transmission modes: Multi-channel Wideband, which delivers up to four stereo audio channels per ADTQ radio; Narrowband, allowing increased RF output power for extended range; Analog FM, offering near-zero latency performance with hybrid technology; and Axient Digital Standard, enabling the ADTQ to function as an Axient Digital transmitter for high-quality, long-distance wireless audio transmission.



22. Yamaha DHR and CHR Series

Yamaha's powerhouse duo, DHR Series and CHR Series speakers, revolutionize sound with unparalleled clarity and power. The compact DHR Series packs a punch with its 2-way bi-amp powered loudspeaker system, perfect for installations and portable gigs. Meanwhile, the CHR Series brings the house down with its high-performance 12-inch woofer. Each model in the series has been optimized to meet the demands of a variety of sound reinforcement applications. DHR 12/CHR 12 for fixed installation and utilities And DHR 12M/CHR 12M designed for use as floor monitors. Combined with practical features adapted for their specific applications. This series gives you the flexibility to choose the ideal speaker for a wide variety of sonic environments.



23. Waves SuperRack Live Box

The Waves SuperRack Live Box is an exceptional hardware unit that brings seamless plugin integration to live sound. With real-time processing, ultra-low latency, and support for up to 64 stereo channels, it enables engineers to run Waves plugins effortlessly in any live environment. Compact, durable, and portable, it's designed for demanding tours and complex live setups, offering studio-grade sound and flexibility on stage.



24. NEXO nanoNXAMP4 Amplifier

The NEXO nanoNXAMP4 is a compact, high-performance amplifier designed for installations and live sound applications. The 4-channel nanoNXAMP4 delivers 4 x 250W utilising highly reliable, ultra-low distortion Class D amplifiers and SMPS with PFC to provide the same sound quality and sonic signature as NEXO's larger NXAMPK2 TD Controllers. Also, it can be operated as Remote control through integrated WiFi Ideal for powering Nexo's compact speaker systems, it's the ultimate solution for installations, live events, and more.

25. Apogee Symphony Studio Series

The Apogee Symphony Studio Series offers high-quality audio interfaces designed for professional recording and music production. Featuring top-tier AD/DA conversion, ultra-low latency, and seamless integration with popular DAWs, the Symphony Studio Series delivers pristine sound quality and powerful performance. Ideal for studios of all sizes, it provides flexible I/O options, intuitive controls, and Apogee's renowned craftsmanship to meet the demands of modern audio professionals.



26. LD MAUI 28G3 – MIX Column PA

Compact, powerful and easy to use, the MAUI 28 G3 column PA is the perfect solution for rental companies and installations. The LD Systems MAUI G3 MIX versions, feature integrated digital 6-channel mixers with effects, dynamics processing, DSP controller, power amplifiers, and speakers. Wireless remote control via MAUI app is also included. The MAUI 28 G3 MIX delivers powerful and precise sound with 1,030 W RMS power (2,060 W peak). For stereo applications, two MAUI 28 G3 MIX units can be linked via SysLink®. The columns are equipped with 12 x 3.5" midrange drivers and 2 x 1" tweeters, providing an even sound distribution. Equipped with a single 12" woofer and four bass reflex ports, the MAUI 28 G3 MIX subwoofer delivers a clear, tight and punchy low end down to 37 Hz. The MAUI 28 G3 MIX columns are designed as cardioid speakers with up to 18 dB of attenuation at the rear, resulting in a clean stage sound.



27. Elation LIMELIGHT

Elation's LIMELIGHT is a new generation of high-powered colour-mixing wash luminaires that redefine colour intensity and PAR light versatility. A dedicated variable CCT control channel (2400K - 8500K) gives precise colour temperature control, while CMY emulation mode caters to those familiar with that colour mixing system. LIMELIGHT's integrated library of calibrated colour presets has got you covered. Electronic dimming, variable 16-bit dimming modes, and strobe effects add to its range of capabilities.





28. Real Audio RTZ-5000® DP

The Real Audio Systems RTZ-5000® DP is a 500-watt, two-zone PA mixer amplifier with a built-in digital player. It features six microphone inputs, two auxiliary inputs, and a dedicated CD/stereo input (L&R). The integrated MP3 player supports USB, SD, and MMC cards and includes a remote control and LCD display. A stereo/mono switch allows users to adjust the ambience of the MP3 and CD/stereo inputs for DJ applications. It includes a separate USB level control, line input and output for mixer and booster amplifier connections, and a preamplifier output for recording. Each zone has a box speaker/driver unit selector switch, with bass boost disabled in driver unit mode for safe operation. Additional features include a zone on/off facility and a resettable circuit breaker for protection against overload and short circuits.



30. EAW SB828 Subwoofer

The EAW SB828 subwoofer is an evolution of the SB series, incorporating advanced fluid dynamic research and innovative transducer design. It features a low-turbulence port for enhanced performance and premium dual voice coil transducers with ultra-linear suspension, ensuring exceptional impulse response. Its compact height and depth allow for versatile placement in various room types, with configurable sound-isolating feet supporting both horizontal and vertical installation. Additionally, sixteen M10 mounting points provide multiple permanent suspension options. The SB828 can be ground-stacked or suspended and offers flexible mounting, weather protection, and colour customisation.



29. Neumann KK 105 U Capsule Head

The KK 105 U capsule head is based on Neumann's highly successful, award-winning KMS series of wired stage microphones. The KK 105 U is equipped with a true condenser capsule. Featuring a precise super cardioid directional pattern with high feedback resistance, this studio-grade microphone is equipped with a Neumann condenser capsule for exceptional sound quality. It offers a wide frequency range of 40 Hz to 20 kHz, ensuring detailed and natural audio reproduction. Designed for versatility, it is compatible with third-party handheld transmitters, making it a reliable choice for professional audio applications.



31. LEA Professionals Connect Series Half-Rack

The CONNECT SERIES Half-Rack amplifiers, including models CS34, CS64, CS124, CS34D, CS64D, and CS124D, are designed for small to medium-scale installations. Each model supports direct HiZ (70V or 100V) or LoZ operation, selectable by channel. These amplifiers offer a total harmonic distortion plus noise (THD+N) of 0.1% from 20Hz to 20kHz, with a frequency response of 20Hz to 20kHz (± 0.5 dB) at 4 Ω , 8 Ω , 70V, and 100V, and -2.5dB at 20kHz when operating at 2 Ω . A 96kHz Analog Devices DSP provides input routing, 48dB/oct crossover filters, eight parametric EQ filters, user-adjustable speaker limiters, and real-time load monitoring.

32. Audio-Technica AT-UMX3 USB Audio Mixer

The Audio-Technica AT-UMX3 is a compact USB audio mixer designed for livestreaming and other applications. Drawing on professional audio expertise, it offers a user-friendly plug-and-play experience without requiring additional drivers or complex setup. A loopback function enables seamless mixing of microphone and instrument audio with computer sound. The mixer includes a control panel with intuitive functions such as microphone mute and monitor mute, and its high-performance A/D converter supports up to 24-bit/192 kHz resolution for clear sound. Designed to minimise electronic interference, the AT-UMX3 ensures reliable audio performance free from unwanted noise.





33. Robe iBOLT

The iBOLT is a unique, innovative, hugely bright fixture that is the first real replacement for conventional 7K xenon searchlights on the market. With the same feature set as Robe's groundbreaking and universally popular MegaPointe®, the iBOLT can be a beam, spot, wash and effects luminaire for stage and outdoor use. It has a beautiful – 300mm – large front lens and has been described as “a MegaPointe on super-steroids!” This product was noted by the judges for its range of features while addressing the hazards associated with the current generation of bright light fixtures.



34. Adamson VGt Line Array

Adamson's flagship VGt is a peak performance large-format line array loudspeaker and the first member in the Vergence Group. Including 8 transducers, amplification, a networked DSP endpoint and Autolock rigging in a lightweight and compact package marks a quantum leap in loudspeaker evolution. For efficient cabling, all necessary connections can be daisy chained, including power, analog audio and redundant network containing Milan digital audio and AES70 control data. VGt is the pinnacle of high-performance large-format loudspeaker products.



35. Claypaky Orkis Cyc

The Orkis Cyc is an innovative cyclorama light designed to deliver seamless washes of light with exceptional colour accuracy and efficiency. Utilising multi-spectral 6-colour HCR LED technology, it expands beyond standard RGB with the addition of Amber, Cyan, and Lime, ensuring precise colour reproduction and a tunable white range from 2500K to 8000K. Compact and lightweight at under 6 kg, it is adaptable for both floor and truss mounting. Its advanced Active Liquid Cooling System, developed with FLOW Technology, significantly reduces noise levels by up to 24.2 dB in standard mode, making it ideal for silent operation in theatrical productions, concerts, and film studios. Combining high-performance lighting with minimal noise and energy efficiency, the Orkis Cyc redefines the role of cyclorama lights in stage and studio environments.



36. Avolite Diamond D7 – 330 Console

The latest addition to the Diamond collection of consoles, the D7 – 330 features 30 motorised playback faders and 30 ultra-high-resolution touch-sensitive playback encoders with a push function. It is equipped with three 14-inch capacitive touchscreens with adjustable brightness and includes dual motorised, touch-sensitive master cue-list and sequence faders, complemented by nine control buttons. Designed for both travel and performance, the D7-215 weighs under 32kg and fits into a custom Peli Air Case 1745, making it compact enough to be checked in as hold luggage for effortless transport.

37. Alpha Theta Omni-Duo



The OMNIS-DUO supports StreamingDirectPlay, allowing direct access to music platforms such as Beatport Streaming and TIDAL without the need for a USB drive. Users can browse and play tracks spontaneously while monitoring the waveform display, which includes BPM and grid analysis for precise beat matching. Additional features such as Quantize and Beat Sync enhance mixing accuracy. The unit measures 500 × 307 × 71 mm and weighs 4.6 kg. It offers a frequency response of 20 Hz to 20 kHz.

38. Solid State Logic T S400 Console



The new T S400 console represents the latest control surface offering for SSL's next-gen IP-native broadcast production platform, System T. It is a flagship control in a compact surface. Available in standalone frames of 16+1, 32+1, or 48+1 fader versions, the S400 sits between the compact, fixed frame S300 and flagship, modular S500. The Master Section features dedicated monitoring controls, a Focus Fader, and a set of assignable User Keys. Additionally, a five-inch touchscreen provides an FX rack meterviewer with inbuilt Loudness, True Peak and Phasescope metering, removing the need for external metering. With 21 physical user keys, the S400's slimline Master Section allows users to program control of the features most relevant for each production.

39. Neutrik NA-4I40-AES72 Stagebox



The Neutrik NA-4I40-AES72 is a 4-channel stagebox designed for transmitting microphone levels, analogue line levels, AES3, DMX, or intercom signals via a single CAT cable. It features four combo XLR/jack female input channels and four XLR male output channels within the same housing, allowing it to function as a splitter for monitoring. Two RJ45 AES72 Type 4E connectors provide interconnection, with an additional etherCON feedthrough for looping signals to other devices. Each input includes a ground lift to prevent ground loops and an option to invert the signal. The device operates with a minimum shielded CAT5 cable, supporting a maximum rated voltage of 48 VDC and a rated current of up to 500 mA.

40. Behringer 1273



The Behringer 1273 is a two-channel microphone preamplifier with built in EQ. The 1273 is built around a Class A discrete circuit which ensures the highest signal integrity with minimal coloration. The preamplifier includes an electronically controlled, resistor-stepped rotary gain switch that offers up to 80 dB of gain adjustment. The 1273 also has versatile gain controls for each channel for various input types such as mic, line and instrument, providing comprehensive control and flexibility for different recording scenarios.

41. VARI-LITE L2600 SE SERIES

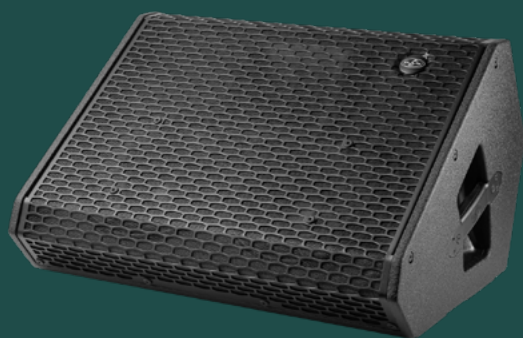


The VL2600 series comprises of high-output, general-use lighting fixtures designed for touring, television, and theatre applications. Featuring a 570W LED engine, the SE Profile delivers 23,750 lumens, while the SE Wash produces 27,500 lumens, providing industry-leading efficiency. The series offers a broad colour palette through a familiar CMY colour mixing system and includes extensive profile effects such as an iris, fixed and rotating gobo wheels, prism, and frost. The wash models feature a wide zoom, adjustable edge softness, and an automated barn door. Originally introduced in 2017, the VL2600 series has been upgraded with a brighter light engine, emphasising sustainability and durability.



42. Astera LunaBulb

Astera's LunaBulb is an ultra-lightweight professional luminaire and designed for both indoor and outdoor use specifically for professional filming. The LunaBulb combines a traditional bulb appearance with the performance of a professional luminaire, designed to meet the needs of filmmakers for on-camera practicals while offering limitless creative possibilities without disturbing event planners. The LunaBulb is powered by the Titan LED Engine and comes in RGB, Mint, and Amber colors. The light output at 1 meter is 18.3 Lux at 3200 K, 18.8 Lux at 4000 K, and 19.6 Lux at 5500 K, with a CRI (Ra) and TLCI rating of ≥ 96 across 3200-6500 K. The beam angle is 240° and the field angle is 338° , providing wide coverage, while the strobe function operates at 0-25 Hertz. With an IP44 rating, the LunaBulb is splash-proof, making it durable for various environments.



44. DAS Audio ARA-M210 Stage Monitor

The ARA-M210 is a stage monitor ARA series, featuring a symmetrical component configuration that provides even sound distribution. This monitor operates within a frequency range of 55 Hz to 20 kHz and is powered by a class D amplifier capable of delivering 1200 W continuously and 2400 W at peak. The maximum SPL of 143 dB ensures ample volume and clarity for live performance settings. The monitor's electronic architecture includes a 96kHz sampling rate with advanced digital signal processing. The inclusion of Finite Impulse Response (FIR) filters ensures acoustically flat magnitude and phase response, facilitating coherent audio output. The monitor's electronic architecture includes a 96kHz sampling rate with advanced digital signal processing. The inclusion of Finite Impulse Response (FIR) filters ensures acoustically flat magnitude and phase response, facilitating coherent audio output.



43. NEXT Audiogroup LAs518A Subwoofer

Boasting dual long-excursion, high-power neodymium 18" drivers, the LAs518A delivers unparalleled low-frequency performance. With optimized port tuning and exceptional peak-to-peak excursion capability, the LAs518A ensures deep, resonant bass down to 24 Hz at -10 dB. Encased in a sturdy 89 kg front-loaded bass reflex enclosure, the LAs518A is equally adept for installation and rental applications, delivering a maximum peak SPL of 143 dB. Driving the LAs518A is a lightweight, highly efficient 2-channel class D amplifier module, capable of delivering up to 5000 W with remarkable precision and detail. Equipped with an integrated universal mains power supply featuring PFC, this subwoofer guarantees consistent performance worldwide. Experience the pinnacle of subwoofer technology with the LAs518A, where power, precision, and versatility converge to elevate your audio experience to new heights.



45. CODA Audio LINUS6.4 Amplifier

The CODA Audio LINUS6.4 is a 19" 1U four-channel networkable installation amplifier with integrated DSP, delivering 6000 W at 2Ω . Designed for fixed installations, it provides flexible power configurations, offering 4x 1500 W at 2Ω , 2x 3000 W at 4Ω , or 1x 3000 W at 4Ω plus 2x 1500 W at 2Ω . The amplifier can be controlled via the front panel, the LINUS App, or LINUS Control, ensuring seamless integration and operation.



46. Proton by Nx Audio MT2601

Proton by Nx Audio launched the MT2601, big brother to the MT2201, offering a fantastic 4000 + 4000W RMS @ 4 Ohms with damping factor > 1200 . Pairing Class D efficiency with the MT Series legacy of superb bass response and woofer control, the MT2601 is an excellent choice for the power-hungry dual 21" 6"VC subwoofers popular in the Indian market today.



47. RØDE Wireless GO (Gen 3) Wireless Microphone

RØDE continues to set the standard in wireless audio technology with the Wireless GO (Gen 3), the latest evolution of its industry-leading microphone system. RØDE integrates cutting-edge features such as Series IV 2.4 GHz digital transmission with 128-bit encryption and consists of a 32-bit float on-board recording. Intelligent GainAssist technology, flexible output gain control, and a safety channel further enhance the reliability of recordings, reinforcing RØDE's reputation for superior sound quality. The built-in omnidirectional microphones feature upgraded preamp circuitry, mirroring the advancements found in the Wireless PRO system.



48. Nx Audio PANTHER15A Speakers

The Nx Audio Panther Series are Wooden Active Speakers, offering the user superb sound quality and low distortion with a sleek design and high SPL, perfect for high quality install and mobile applications. With a Rotatable Horn, the Panther Series can be used horizontally or vertically depending on the user's needs, providing precise control of sound and dispersion.



49. DirectOut MAVEN DSP Platform

DirectOut's MAVEN is a compact 1RU DSP platform built on the success of the PRODIGY series. MAVEN delivers powerful DSP performance with full compatibility with PRODIGY.MP. It supports various audio network formats, including Dante, AVB/MILAN, RAVENNA/AES67, and Soundgrid, making it suitable for live sound, installation, remote production, studio recording, and broadcast. MAVEN offers flexible routing, a scalable DSP core, and inherits the sound quality and reliability of PRODIGY.MP, providing a flexible, reliable solution in a reduced form factor.



50. Circle Pro Audio CPA F400 SA

The CPA F400 SA is India's first antenna distribution system featuring an integrated spectrum analyzer. It offers a frequency range of 450 MHz to 950 MHz with a total gain of 0 dB \pm 1 dB and operates with a 50 ohms input/output impedance. The antenna power supply is +8V DC/150mA with a central positive point, and the system provides a 12V DC/3A (max) DC output across four groups with a central positive point. The directional antenna, which can be used with the antenna power supply function of both the receiver and the distribution system, operates within the same 450 MHz to 950 MHz frequency range.

*To see your product featured in our next **Top 50 Products** list, submit your latest pro audio and lighting innovations launched in 2025 for consideration. Reach out to **Shanaya Sequeira** (shanaya.sequeira@hyve.group) to get your products in the spotlight!*