

Sound, Uninterrupted

Six Pendant Speakers to invest in this year

Sound. The proof of existence. The purveyor of language. The resonance of life. In so many ways, it is impossible to think of the surrounding world in absence of sound. After all, even meaning cannot exist in a vacuum. This stands true, especially in a world that is increasingly reliant on sound to communicate, work, and live. With the entry of pendant speakers in the AV market, the vision of uninterrupted sound crystallized. Designed to capture and disperse sound effortlessly, pendant speakers are aesthetic and effective in form and function. This article covers some latest pendant speakers that are ideal for commercial installation in office spaces, conference venues, retail stores, and restaurants. This feature is intended only as a guide and does not endorse any product.

Yamaha VXH6

Yamaha's premium pendant speaker, measuring at 6.5 inches, features a low-impact, ergonomic design to make it as visibly less intrusive as possible. The speaker, available in black and white has a magnetic grille with a contoured profile that is paintable, making it an ideal fit for any kind of ceilings (be it sloped or open) and décor.

Main Features include:

- IP45-rated to support a wide range of applications and environments
- Gripple suspension hardware + wire kit for easy installation and adjustment
- Supports high impedance and low impedance
- Easily switchable speaker wattage (even after installation)
- Comes with an in-built carrying bag for enhanced portability
- Feature paintable grilles

Technical Specifications::

- Speaker Type: Coaxial 2 way, Bass reflex type
- Frequency Range: 55 Hz – 20 kHz (Full Space: 4π)
- Nominal Coverage: 120° conical (Full-space: 4π)
- Crossover Frequencies: 3 kHz
- Components: LF: 6.5" (16 cm) Cone, HF: 1" (2.5 cm) Soft Dome
- Power Rating: NOISE: 75 W, PGM: 150 W, PEAK: 300 W
- Nominal Impedance: 8 Ω
- SPL: Sensitivity (1W; 1m on Axis): 93 dB (Full-space: 4π)
- Peak (Calculated): 118 dB (Calculated, 1 m)
- I/O Connectors: Euroblock (4 pin) \times 1 (input: +/-, loop-thru: +/-): Min. wire size



- AWG 24 (0.2 sq), Max. wire size AWG 12 (3.5 sq)
- Dimensions: Diameter: Ø341 mm (13 - 3/8"), D: 379 mm (14 - 1/2")
- Net Weight: 5.7 kg
- Certificate: UL1480A, NFPA70, CE, RoHS

SoundTube NextGen MM43- BGM

Available in signature NextGen colours, featuring adjustable tap settings, and a sleek, modern interface, the MM43-BGM is the updated version of SoundTube's OG Pendant Speaker. With redefined aesthetics and form-meets-function evolution, the MM43-BGM is the next step in the world of pendant speakers – better and bolder than before.

Main Features include:

- 3-way pendant speaker with 5.25" dual-chamber, .75" BroadBeam® ring tweeter, and 4" woofer
- Only full-range pendant speaker featuring built-in band-pass subwoofer
- Built-in 30-watt transformer
- Features a UL-listed hanging hardware
- Comes with SpeedClamp™ self-locking wire grip for easy, secure installation

Technical Specifications:

- Frequency Response (\pm 10 dB): 37 Hz - 27 kHz
- Frequency Response (\pm 3 dB): 62 Hz - 24 kHz
- Max. Continuous Power RMS: 30 W
- Weight: 14 lbs
- Height: 22"
- Diameter: 7.4"
- Max SPL @ 1M: 103 dB
- Max. Program Power: 60 W
- Nominal Impedance (Ω Ohms): 8 Ω
- Tweeter Driver: .75" Synthetic Soft Dome
- Woofer Driver: 4" Polypropylene Cone with Butyl Rubber Surround



- Subwoofer Driver: 5.25" Polypropylene Cone w/ Rubber Surround
- Sensitivity dB @ 1W/1M: 84 dB
- Sensitivity dB @ 2.83V/1M: 84 dB
- Tap Selector: Rotary Switch
- Transformer Options: Included 70.7 / 100 V transformer (30 W maximum)

JBL Control 68HP Two-Way Pendant Loudspeaker

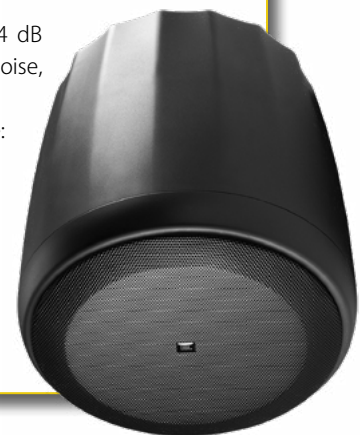
For acoustically-challenged spaces requiring high SPL capability, open architectural ceilings, and huge indoor locations, the JBL Control 68HP Two-Way Pendant Loudspeaker is the ideal pick.

Main Features Include:

- Coaxial design with 200 mm (8 in) Kevlar™ reinforced woofer with 50 mm (2 in) voice coil, 25 mm (1.0 in) titanium-dome compression driver
- 250-watt high power capability (1000W peak) and high SPL of 114 dB (120 dB peak)
- Hanging hardware with 4.5 m (15 foot) galvanized steel cable and easy to adjust clamp
- 8 ohm and 70V/100V operation
- Extremely consistent constant-directivity 110° conical coverage
- Color options available in black and white

Technical Specifications:

- Frequency Range (-10dB): 52 Hz - 17 kHz
- Frequency Response (+/-3 dB): 72 Hz - 16 kHz
- Power Rating: 150 Watts Continuous Pink Noise Power (600 Watts peak, 100 hrs), 250 Watts Continuous Pink Noise Power (1000 Watts peak, 2 hrs), 500 Watts Continuous Program Power (2 hr)
- Sensitivity: 90 dB
- Maximum SPL: 114 dB continuous pink noise, 120 dB peak
- Nominal Coverage: 110° conical (+30° / -30°)
- Directivity Factor (Q): 7.8
- Directivity Index (DI): 8.9 dB



From Yamaha to JBL and Extron to Bose, pendant speakers have reimagined, restructured, and revolutionized sound in commercial spaces. PALM AV-ICN reports on the six investment-worthy pendant speakers from the AV industry.

- Nominal Impedance: 8Ω
- Transformer Taps: 70V: 68W, 34W, 17W, & 8.5W
- 100V: 68W, 34W, 17W
- Drivers: 200 mm (8 in) Kevlar(tm) reinforced cone, 50 mm (2 in) CCAW voice coil on fiberglass voice coil former, 25 mm (1.0 in) compression driver, titanium dome, ferrite magnet assembly, Kapton(tm) voice coil former
- Terminals: Two removable locking euro-block 2-pin connectors with screwdown terminals for bare wire. Connectors paralleled for input and loop-thru. Max. wire 12 AWG (2.5 mm²). Rubber terminal covers included.
- Enclosure Material: High impact polystyrene
- Color: Black or white
- Dimensions: 333 mm (13.1 in) diameter x 344 mm (13.6 in) height to top of cabinet. 369 mm (14.5 in) to top of suspension bracket
- Net Weight: 5.9 kg (13 lbs)
- Shipping Weight: 14.1 kg (31 lbs)

Extron SF 28PT – SoundField 8” Two-Way Pendant Speaker

For high-ceiling and open-ceiling applications in contemporary structures, the Extron SF 28PT two-way pendant loudspeaker delivers superior audio quality coupled with an architecturally clean, suave design that can blend well in any interior ambience. Unobtrusive, clean, and concealed, in installation and application, the SF 28PT Pendant Loudspeaker is here to take the AV industry in an entirely new direction..

Main Features include:

- 8” (203 mm) long throw woofer
- 1.1” (28 mm) silk dome tweeter
- Frequency range: 58 Hz to 22 kHz
- 8 ohm direct or 70/100 volt operation
- 80° conical dispersion
- 90 watts continuous pink noise
- 180 watts continuous program
- Architecturally clean, unobtrusive design using Extron exclusive PendantConnect speaker cable
- Available in black and white colours. Paintable to suit any décor.
- UL-listed for safety

Technical Specifications

- Speaker type: Pendant speaker with plastic back can



- Frequency range: 58 Hz to 22 kHz, -10 dB, full space (per IEC 60268-5)
- Power capacity: 90 W (rms) continuous pink noise, 180 W (rms) continuous program
- Rated maximum input voltage (MIV): 26.9 V (90 W at 8 ohms) (per AES2-2012)
- Maximum SPL: 103 dB, 1 m (based on MIV), 105 dB, 1 m (linear)
- Nominal sensitivity: 86 dB SPL, 1 W, 1 m, full space
- Nominal impedance: 8 ohms per speaker
- Crossover frequency: 2.5 kHz
- Nominal coverage angle: 80° conical coverage (1 kHz to 4 kHz)
- Drivers: Woofer: (1) 8” (203.2 mm) polypropylene cone with moisture resistant coating, Tweeter: (1) 1.1” (28 mm) silk dome
- Rotary switch taps: 70V: 64 W, 32 W, 16 W, 8 W, 8 ohms direct, 100V: null, 64 W, 32 W, 16 W, 8 ohms direct
- Overload protection: Full range power limiter with the 8-ohm direct input only, protecting the tweeter, woofer, and crossover
- Input connector: (2) 2-pole splicing connectors, (2) 3-pole splicing connectors, for 1 input and 1 loop-through
- Height: 18.25” (46.4 cm)
- Width: 30.63” (77.8 cm)
- Depth: 15.75” (40.0 cm)
- Weight: 32.0 lbs (14.51 kg)

Bose DesignMax DM3P Loudspeaker

A coaxial two-way pendant loudspeaker, the Bose DesignMax DM3P Loudspeaker offers clear sound and premium aesthetics for every kind of commercial installation. Available in both black and white colour options, the pendant loudspeaker features a recessed single-point suspension system that gives it a sleek, eye-catching appearance. .

Main features include:

- No DSP or EQ required
- Consistent sound quality with Dispersion Alignment System
- Removable logos and minimum bezel-grilles, available in black and white colour options
- Comes with Euro-lock connectors for easy, secure installation
- Recessed single



point suspension system to hide hardware and service loop

Technical Specifications:

- Frequency Response (+/-3 dB): 80 - 20,000 Hz
- Nominal coverage (H x V): 130° conical
- Power Handling, peak: 100 W
- Maximum SPL @ 1m: 99 dB
- Frequency Range (-10 dB): 75 - 20,000 Hz
- Power Handling, long-term continuous: 25 W
- Sensitivity (SPL/1W @ 1 m): 84 dB
- Nominal Impedance: 8 Ω (transformer bypass)

Origin Acoustics PPSUB8 Pendant Loudspeaker

One of the boldest pendant loudspeakers in the market, the PPSUB8 Pendant Loudspeaker offer superlative bass and dispersion in any setting, especially any highly-modern enclosure. The PPSUB8 Pendant Loudspeaker is available in both black and white to add to the architectural aesthetic of any indoor commercial environment.

Main features include:

- Rear-facing tuned bass radiator
- UL-listed for safety compliance
- Gripple suspension kit included

Technical Specifications:

- Woofer: 8” Polypropylene
- Power Handling (Program Power): 200 Watts
- Power Handling (Cont. Pink Noise): 125 Watts
- Frequency Response: (- 10dB): 40Hz-250Hz, (- 3dB): 55Hz-250Hz
- Nominal Coverage Angle: 180 Degree Conical Coverage
- Sensitivity @1m: 90dB
- Rated Maximum SPL: 110dB
- Impedance: 8 ohm Nominal
- Transformer Taps: 70V -120W, 60W, 30W, 15W; 100V - 120W, 60W, 30W
- Diameter: 10” (254mm)
- Length: 16 1/4” (412mm)
- Feature: 8” Passive Radiator
- Colors: Black, White

